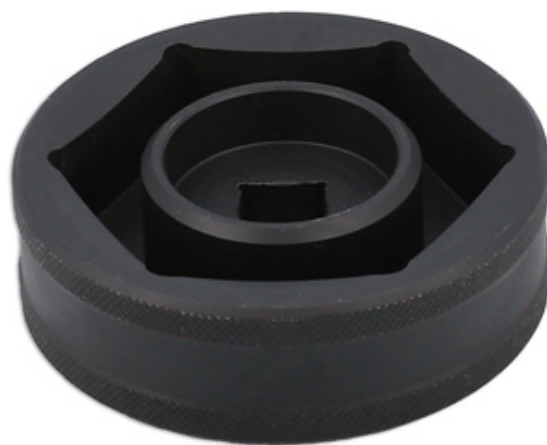


## Wheel Nut Socket 60mm - for KTM Rear

Manufactured from SCM440 alloy steel, the Laser 8025 rear wheel nut socket has been specially designed to fit the KTM rear wheel nut on the 1290 Super Duke. Its strength allows the use of an impact gun to remove the often stubborn high torque wheel nut.



### Additional Information

- 60mm single Hex shallow fit; 1/2"D socket.
- Applications include: KTM Super Duke 1290.
- Shallow profile combined with central boss helps keep the socket on & aligned when removing these high torque fixings.
- Small enough for on-board tool kit.
- Impact gun safe; maximum torque: 700Nm.

<http://lasertools.co.uk/product/8025>



